



# Accessories & Consumables

PRODUCT CATALOG



# Accessories & Consumables

## PRODUCT CATALOG

**ACCESSORIES**

**CONSUMABLES**

**SOFTWARE**

### BOGE Piston Compressor

For over a century robust BOGE piston compressors have formed the backbone of your compressed air supply – whether in the skilled trades sector or industry. These compressors only contain high-quality components, so minimising maintenance and permitting use at high ambient temperatures.

Effective free air delivery: 75 l/min.  
 Maximum pressure: 10 and 15 bar, 150 and 220 psig  
 Rated power: 230 V

Boge P 1 LDR Piston Compressor 75 liter/min. 230 V + refrigerant dryer

Boge P 2 LDR Piston Compressor 154 liter/min. 230 V + refrigerant dryer



Nr. 2186

### VARIO 555eMA incl. Tape Aerial Wet Tape Machine

The VARIO 555eMA is an allrounder and best-selling electronic model. It is variable and can be further upgraded with various accessories. It is engineered to meet electrical requirements worldwide. This machine is created for fast-paced packaging environments where increased productivity, efficiency, and carton sealing output is needed.

	Specifications
Dimensions	51 x 32 x 30 cm
Shipping Weight	15 kg
Tape Roll Capacity	40 - 80 mm
Dispensing Speed	115 cm/sec.
Water Bottle Capacity	1 l
Electrical Requirements	Available in 100 V, 115 V, 220 V



Nr. 359 & 362



### Zebra GK420T Barcode Printer

The Zebra GK420T has the easiest ribbon-loading system around. It produces 203 dpi print resolution and speeds up to 127 mm per second. It is well-suited to a variety of applications and industries. The GK420T features a wide-range of options including Bluetooth wireless connectivity and 10/100 Ethernet, in addition to standard USB/serial/parallel.



Recommended for printing up to 500 labels per day

Modell	Max Print WxL	Print Speed	Print Quality	Label Core
GK420T	104 x 991 mm	127 mm/sec.	203 dpi	25,4 mm

### Zebra 105SL Plus Barcode Printer

When economical and reliable high-performance printing is required, the rugged 105SL Plus is the right choice. Building on the legacy of Zebra's proven high performance printer design, the 105SL Plus provides high speed printing, a multitude of connectivity options and all-metal construction to withstand tough use.



Recommended for printing up to 500 labels per day

Model	Max Print WxL	Print Speed	Print Quality	Label Core
105SL	104 x 3,810 mm	305 mm/sec.	203 dpi	76,2 mm (25,4 mm Ribbon)

### PackNet.Server® Hardware

- PackNet.Server® Hosting Hardware:
- PackNet.Server® Professional 1 - 8 machines
- PackNet.Server® Enterprise > 8 machines



### Sophos Security Firewall

Firewall for Packsize Hardware

Three options available:

- Sophos Security Basis Firewall System incl. Basic Configuration & 3 years Network Subscription
- Sophos Security Basis Firewall System incl. Basic Configuration, UMTS Box & 3 years Network Subscription
- Sophos Security Basis Firewall System incl. Basic Configuration, UMTS Box, 36 months data tariff & 3 years Network Subscription





### HP Elite E230t Monitor

Boost your productivity with the super-thin HP Elite E230t monitor, with a 58.42 cm (23") Full HD IPS touch display diagonal, which has a touchscreen functionality certified to 10 concurrent points for Windows 10 and providing customizable user comfort – for any touch and every way of working.



### HP ProDesk 400 Desktop Mini

The ultra-compact HP ProDesk 400 Desktop Mini blends harmoniously into the modern workspace with its new, attractive appearance, and presents itself as a cost-effective PC that more than meets the demands of your growing business for reliability and performance.



### Zebra Barcode-Scanner LI3678

The Symbol LI3678 Bluetooth-enabled cordless, rugged scanner captures all one-dimensional (1D) barcodes – even when dirty, damaged or poorly printed. Includes USB kit; 1D laser, cordless; fuzzy logic; charging and communications cradle; 7' straight USB cable; power supply and line cord.

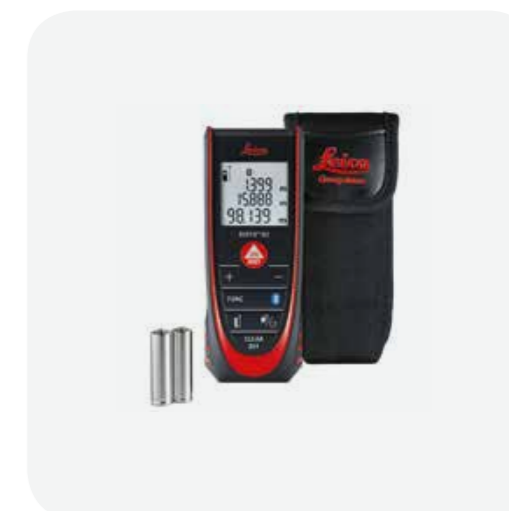


Nr. 1898

### Leica DISTO™ D2 Laser Scanner

This family of scanners offers a model to meet virtually every need in warehousing and manufacturing.

With a measuring accuracy of ± 1.5 mm, the Leica DISTO™ D2 offers high precision at the touch of a button. Functions such as addition and subtraction, area and volume calculations make every measurement task child's play. The instrument stores the last 10 measurement results. The charging station and bracket is included.



Nr. 1517 & 1527 & 454





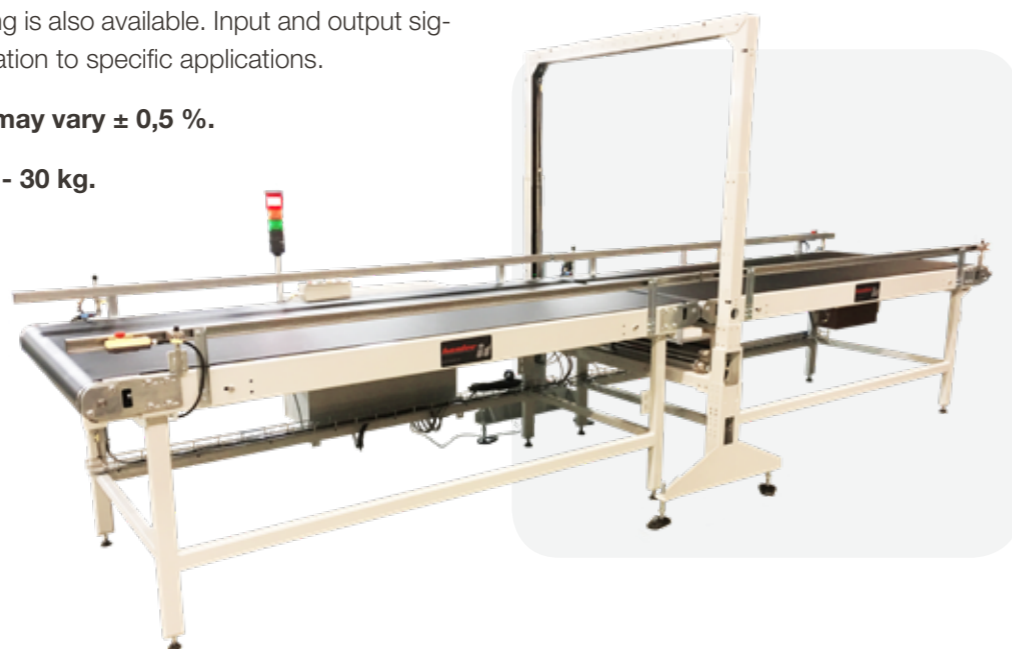
## VML Volume Measurement Scanner

VML (volume measurement system based on light grid) is a volume and weight measurement system, that solves demanding tasks in the field of product measurement. Thanks to its light grids, the VML scanner can accurately determine the smallest possible outer packaging for each object. The special thing about it – it can do this irrespective of the surface finish. Even transparent and foil wrapped objects can be measured reliably.

The VML module is compatible with all Packsize solutions. A system with additional weight recording is also available. Input and output signals allow for individual adaptation to specific applications.

**The accuracy of the scale may vary  $\pm 0,5\%$ .**

**Weighing range between 1 - 30 kg.**



Systemname	Scale option	Scale e-value	Max load	Conveyor width	Infeed Conveyor length	Outfeed conveyor length	Min Object length	Max object length
D-600SE	No		30,000 g	600 mm	1,400 mm	1,400 mm	150 mm	1,000 mm
D-800SE	No		30,000 g	800 mm	2,000 mm	2,000 mm	150 mm	1,600 mm
D-1000SE	No		30,000 g	1,000 mm	2,500 mm	2,500 mm	200 mm	2,100 mm
D-1200SE	No		30,000 g	1,200 mm	2,900 mm	2,900 mm	250 mm	2,500 mm
DW-600SE	Yes	50 g	30,000 g	600 mm	1,400 mm	1,600 mm	150 mm	1,000 mm
DW-800SE	Yes	50 g	30,000 g	800 mm	2,000 mm	2,600 mm	150 mm	1,600 mm
DW-1000SE	Yes	100 g	30,000 g	1,000 mm	2,500 mm	3,100 mm	200 mm	2,100 mm

## Packsize Tables

Additional tables for machine surroundings, can be used as outfeed or working station; Carrying Capacity 250 kg.

Größe B x L	Nr.
1,250 x 700 (650-920) mm	Nr. 2302
1,750 x 1,250 (650-920) mm	Nr. 2141
1,750 x 620 (650-920) mm	Nr. 2142
2,500 x 1,250 (650-920) mm	Nr. 2143
2,500 x 620 (650-920) mm	Nr. 2144

## Measuring Corner for Packsize Tables

Packsize Measuring Corner 600 x 600 x 464 mm – Nr. 2303



Picture shows table B 1,250 mm (Nr. 2302)



### Mosca Strapping Machines

Mosca offers more than just superior strapping performance in a broad range of applications. These are adaptable, high-speed machines with low service costs and exceptional reliability.



### Cushion Pack CP320-S2i

Cushion Pack – shreds cardboard waste to produce padded or flat padding mats i.e. as filler material.

	Specifications
Cutting width - padding	320 mm
Cardboard thickness	15 mm
Production output	2-3 (m³/h)
Working height	870 mm
Motor capacity	0,75 kw
Main voltage	230 V
Dimensions H x W x D	980 x 660 x 660 mm
Weight	110 kg
Implementation	With built-in dust extraction device



### Water-Activated Tape

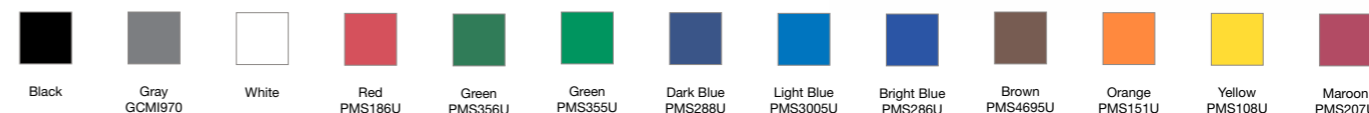
Wet tape grid reinforces bonds instantly to both virgin and recycled fiber surfaces. Therefore, WAT generate an immediate destructive bond resulting in a tamper-evident package. WAT is offered in fiberglass reinforced paper with many styles available in standard prints or customized prints to display your corporate message. They all have one common feature ... uncompromising quality!



Width	Pack Details Rolls Per Case	Colors	Nr.
70 mm	6, 12, 18	Natural	Nr. 2650
70 mm	120, 140	Natural	Nr. 2651
70 mm	480	Natural	Nr. 2652

### Custom-print Options on request

- Up to three standard inks
- Seamless and varnish floodcoating available
- Great way to show your brand
- Viable alternative to random repeat





## Labels

Cost-effective Thermal Labels do not require a ribbon and feature ultra-white, high-print contrast facestock for maximum printability and reliable error-free scans. Direct thermal is ideal for shipping, receiving, case labeling and work-in-progress labels.

Compatible with Zebra Printers and other thermal transfer printers. Available in roll and fanfold formats.

Size B x L	Labels Per Roll	Pack Details Rolls Per Case	Packsize Product	Nr.
100 x 50 mm	700	8, 16, 32	Zebra GK420T	Nr. 2653
100 x 100 mm	350	8, 16, 32		Nr. 2654
100 x 150 mm	250	10, 20, 50		Nr. 2655
100 x 50 mm	2,200	8, 16, 32	Zebra 105SL Plus, X4	Nr. 2656
100 x 100 mm	1,100	8, 16, 32		Nr. 2657
100 x 150 mm	700	8, 16, 32		Nr. 2658
100 x 200 mm	500	8, 16, 32		Nr. 2659



Nr. 2653-2659

## DURA-PRO M 294 Hot Melt Glue

Glue DURA-PRO M 294 is a very high quality case/carton sealing and tray forming hot melt adhesive. It is suited for Packsize Auto Gluer machines and enables fast and efficient packaging processes.

	Specifications
Viscosity	~900 mPas @ 175 °C
Solids	100%
Color	White
Container/Type	Pallets or 25 kg bag
Application	Case & Carton Sealing
Application Temperature	170 °C ± 10
Melter Softening Point	100 °C ± 10



Nr. 2660 – 25 kg bag  
Nr. 2649 – 1,000 kg per pallet (40 bags)

## PACKNET.SERVER

PackNet.Server® for On Demand Packaging® powered by Packsize® is a state-of-the-art packaging design software that gives businesses of all sizes the ability to match their operation's corrugated packaging requirements with the dramatic shift taking place in the way product orders are picked, sorted, packed, and shipped. This production, optimization and packaging software improves overall packaging operations by providing the necessary level of business logic and framework to accomplish On Demand Packaging® functionality, such as the ability to: prioritize box production, meet business workflows, manage either multiple machines or a multi-machine virtual environment, integrate with existing ERP and WMS systems, and create insightful reports.

PackNet.Server® Professional and PackNet.Server® Enterprise are designed to align with the varying degrees of complexity present with each packaging environment and accommodate scalability of these operations to meet future growth or seasonal demands.

### EASY to use and smart integration to any production

Adjustment to existing output structure

### FLEXIBLE PRODUCTION easy to switch

Small batches or fully integrated just-in-time production on order or product basis

### FAST & RELIABLE due to integrated solution

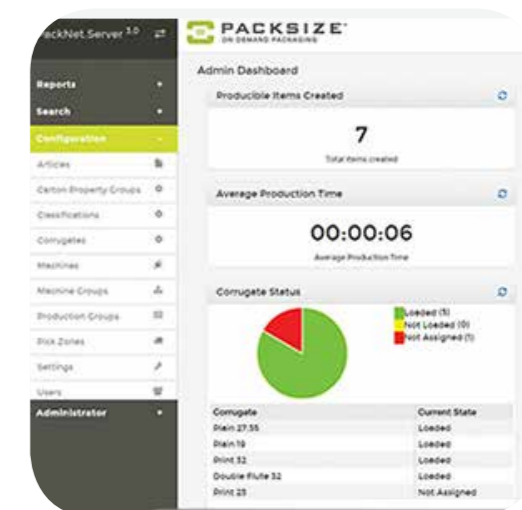
Faster than half automated or even manual machine operation processes and automated calculation – done in milliseconds and same performance 24/7, 365 days per year

### FUTURE SCALABILITY through one platform

Communication to different machine platforms (iQ, EM, M, X)

### RECOMMENDED TO ANYBODY WHO

- believes in a data driven and automated decision making processes.
- would like to achieve flexibility for future machine platform options.
- would like to switch between batch size and one piece flow processes.





## PACKNET.DIM®

Packaging operators can determine dimensional data for a wide range of products with PackNet.DIM®, including those that are difficult-to-size. This PackNet® software module makes it possible to immediately capture supplemental product attributes or details beyond length, width, height, and weight to automate packaging size and type decisions via an intuitive and easy-to-use interface.

PackNet.DIM® makes it possible for packaging managers to expand beyond the confines of their warehouse management system or internal product database by providing additional storage capabilities; a feature that is especially helpful when needing to capture new or changing product attributes.

PackNet.DIM® also integrates with PackNet.Cube® cartonization software to maximize cavity and nesting opportunities previously only accomplishable through manual processes.

### **OPTIMIZATION of your warehouse**

With the data and measurements of your items, you can maximize each storage location and put in as many products per m<sup>3</sup> as possible

### **AUTOMATION of your warehouse**

Knowing dimensional data is an enabler for any kind of warehouse automation, whether that is during storing, picking or outbound packing.

### **EASY data traffic**

We offer a walk through wizard or a faster expert mode to get data into the system, if there is partial data available, we are happy to upload them.

### **SMART integration of data**

System independent or based on DIM data and integrate to customer order data

### **RECOMMENDED TO ANYBODY WHO**

- does not have DIM data available.
- would like to use any kind of automation during storing, picking or outbound.
- believes in a data driven and automated decision making processes in the warehouse.



## PACKNET.CUBE

Every increase in parcel shipping costs, such as with DIM weighing programs, makes automated packaging equipment a more attractive investment. PackNet.Server® production and optimization software works in conjunction with PackNet.Cube® to produce the correct box size to match the order. Shipping costs are minimized through several cube optimization capabilities.

PackNet.Cube® cartonization software maximizes the full potential of On Demand Packaging®. PackNet.Cube® uses a patent-pending complex algorithm to analyze order component placement combinations to produce the most optimally sized box.

If there ever was a reason needed to justify the investment and time required to optimize your packaging process, the new shipping pricing structures make the effort worthwhile. Look to PackNet.Cube® to deliver the smallest possible box via an endless number of box options, while also saving on void filler, obsolete box inventory, warehouse space, corrugated waste, and shipping costs.

### **HIGH QUALITY & FAST calculation**

Standardized decision making – the same product will get same packaging

Automated calculation – same performance 24/7, 365 days per year

### **COST REDUCTION due to integrated solution**

Faster than half automated measuring or even manual machine operation processes

### **EASY to handle with standard interface**

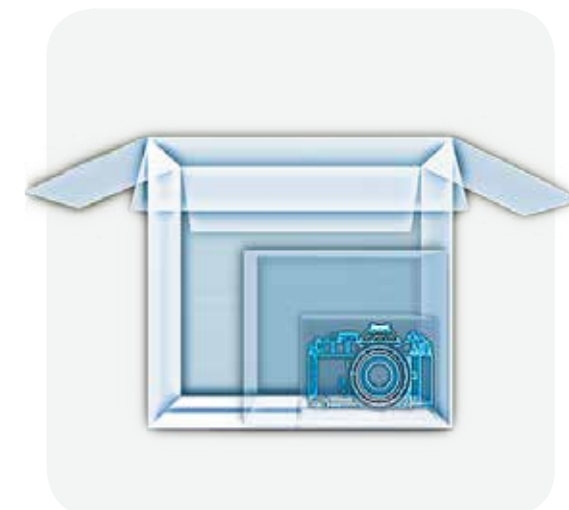
Adoptable to WMS or production planning system

### **SMART and future oriented**

More functions implemented in this module, such as Nesting & Cavity Fill.

### **RECOMMENDED TO ANYBODY WHO**

- has good DIM Data available (i. e. PackNet.DIM®)
- would like to have not too complicated order structures
- would like to increase Nesting and Cavity Fill







## PACKNET.REPORT

PackNet.Report® provides a new level of business intelligence for packaging success, sustainability achievement, and control of cost savings. PackNet.Report® gives the ability to orchestrate PackNet.Server® for On Demand Packaging®, including single or multi-machine visibility and a new level of insight formerly unattainable. The packaging manager can get access to real-time data and analyses from a corresponding machine operator panel that displays a customizable dashboard.

Learn what's happening on the packaging line as it occurs, with the flexibility to respond immediately or to address average-to-peak periods during shifts or seasonal periods of demand. End the guessing and improve the overall productivity of your On Demand Packaging® operations with PackNet.Report®.

\*Requires an On Demand Packaging® machine and PackNet.Server®.

### **VISUALISATION** of the packaging process

Define and measure packaging process KPI's  
(Key Performance Indicators)

### **ANALYSIS & CUSTOMIZING** to make better decisions

Learn how to benchmark, see trends – first step into predictive analysis

Make better decisions and improve: adopt to seasonal effects, plan staff better, which designs work good, process uptime and more

### **Safe time and raw material**

Plan material usage better – first step into VMI  
(Vendor Managed Inventory)

Never run out of Z-Fold

### **ALWAYS & ANYWHERE** real time data

Machine uploads each produced job into the cloud and you will be able to access it from any device (PC, Laptop or mobile device).

### **RECOMMENDED TO ANYBODY WHO**

- believes in data and is interested in real time reports
- who would like to improve towards ,connectivity' and this path into "Industrial Internet of Things"



## CADPACK DESIGNER™

This cloud-based software makes it possible to quickly visualize and create custom box designs and upload them to a Packsize On Demand Packaging® machine.

Enhancing the program's usability, CADPack Designer™ makes it possible for the packaging designer to edit a box design with a built-in auto adjust function. This feature automatically adjusts the entire box design when a change is made to the length of a single line, allowing line-by-line adjustments.

This cloud-based software program does not require installation nor product updates. Full functionality is immediately available upon purchasing an annual license.

### **FLEXIBLE** cloud based

Application anywhere and always

### **Fast** design creation

Design demand to solution time 2 hours vs. 2 days

### **UNIQUE** solution

You adopt packaging design to your process and products (during new product introductions or in product design process and sample making)

### **Easy** to use

Snap tool function, automatic adjust function, click and drop function

### **RECOMMENDED TO ANYBODY WHO**

- has more than 2 new designs or design changes per month
- would like to have flexible, fast & unique aspects and experts on site and available







PACKSIZE GmbH  
Herringhauser Straße 35  
32051 Herford | Germany

P +49 5221 27602-0  
[info.de@packsize.com](mailto:info.de@packsize.com)  
[packsize.com](http://packsize.com)

© 2019 Packsize International LLC. All rights reserved. Packsize and On Demand Packaging and all other Packsize product names are trademarks of Packsize International LLC in the United States and other countries. All other marks are the property of their respective owners, should be treated as such, and may be registered in various jurisdictions.